

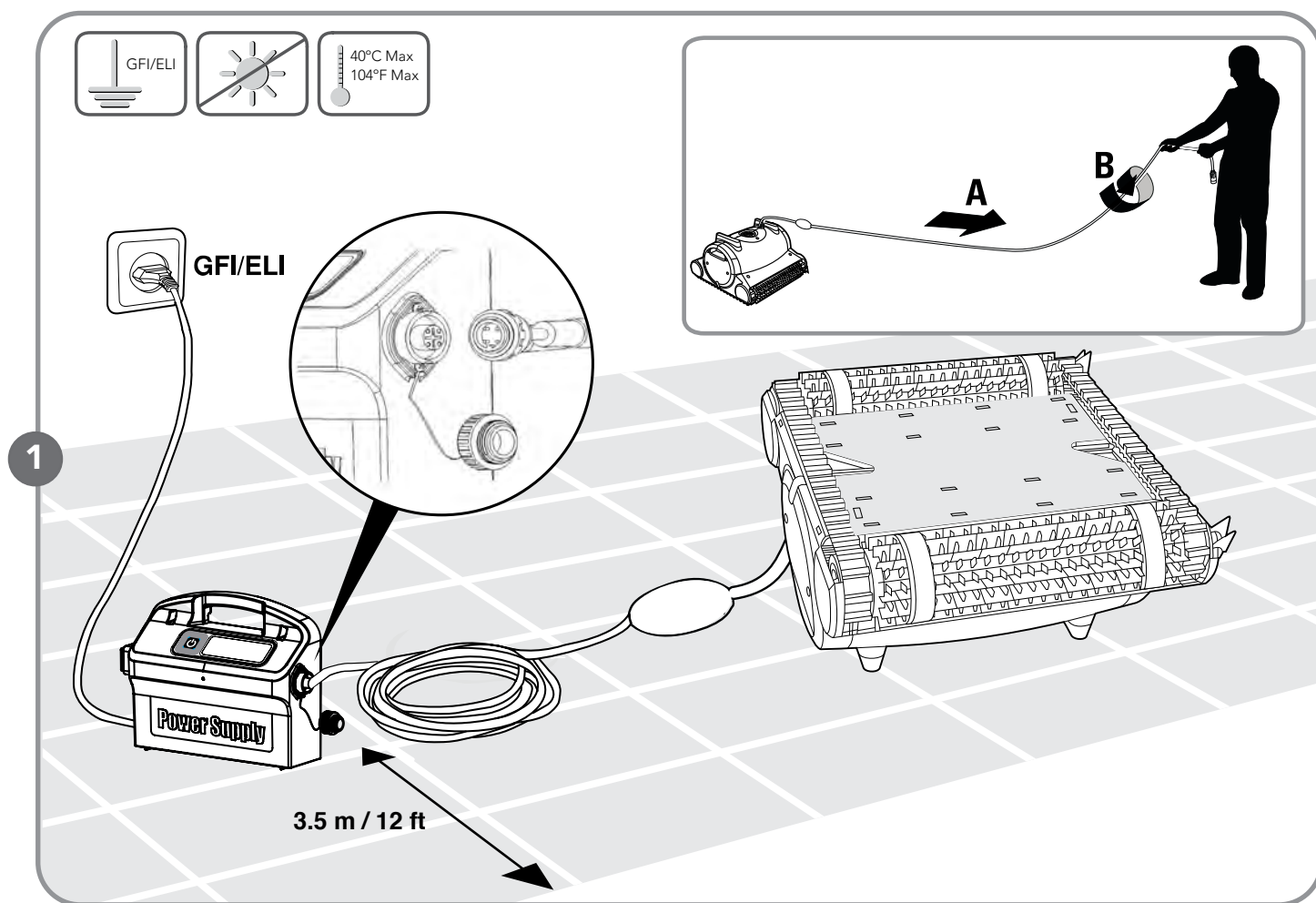
Robot Pool Cleaner by Maytronics

User Instructions



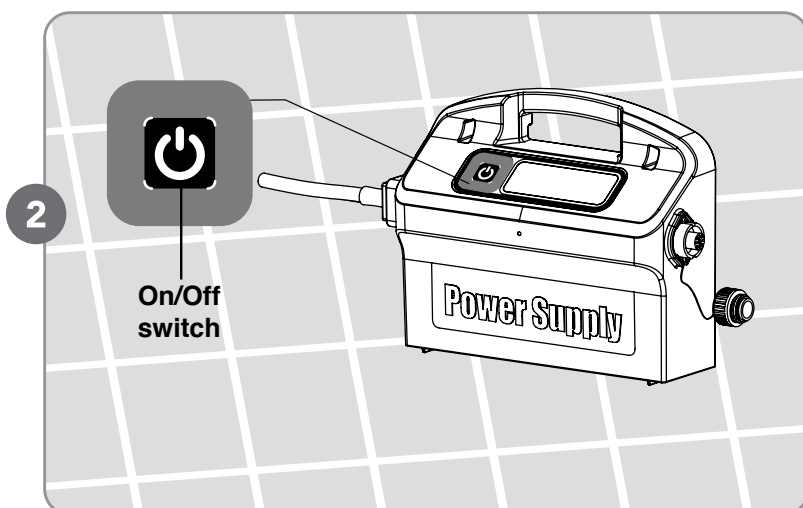
MBC5-UNI

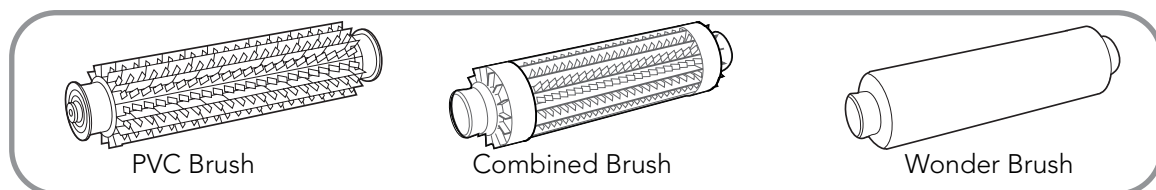
8151820



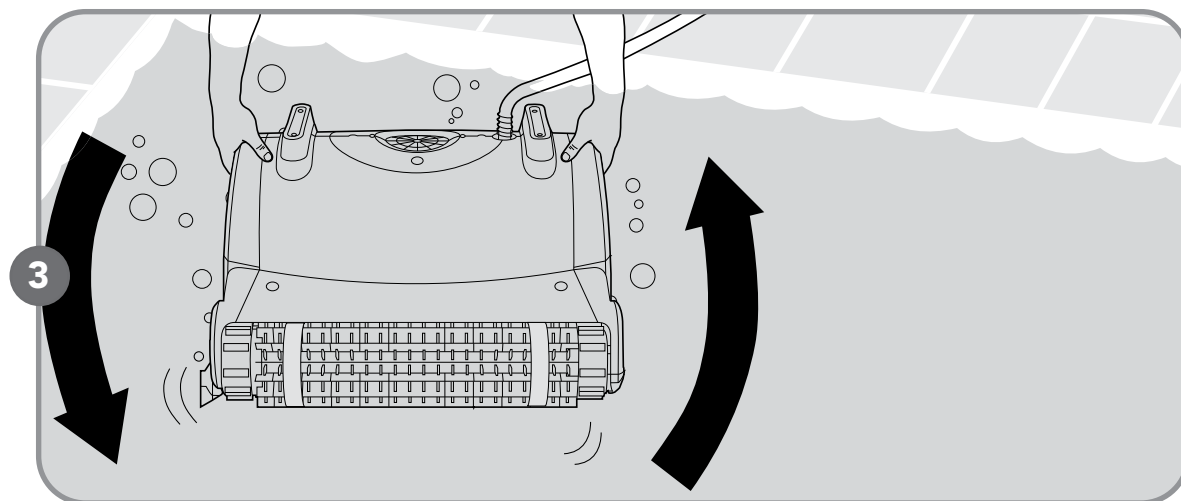
IMPORTANT SAFETY INSTRUCTIONS

- **Do Not** enter the swimming pool while the pool cleaner is working.
- Keep the Robotic Pool Cleaner out of the reach of children or persons with reduced physical, sensory, or mental capabilities, or lack of experience and knowledge, unless they have been given supervision or instruction.
- Keep power supply out of standing water.
- Use only original Maytronics power supply - Digital, "switch-mode", 100-250 AC.





- If brushes are dry, soak them in water until soft.



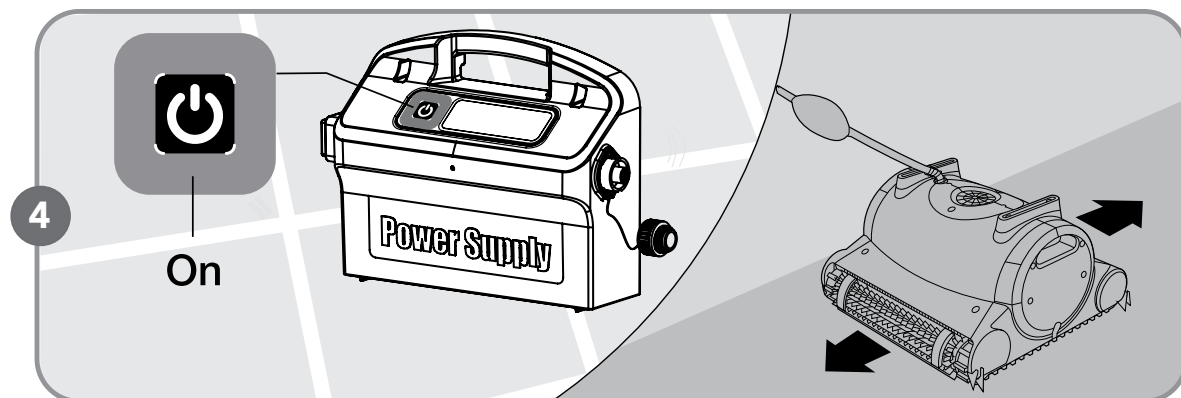
- Shake the robot from side to side or turn it upside down to release trapped air.

CHLORINE
2 - 4 ppm

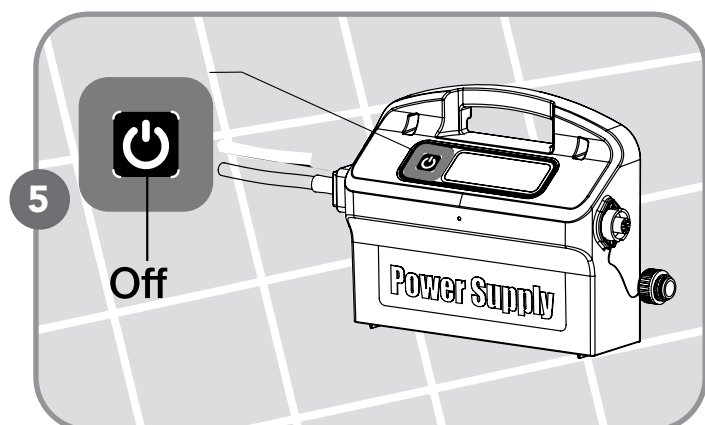
PH
7 - 7.8

 35°C 95°F
6°C 43°F

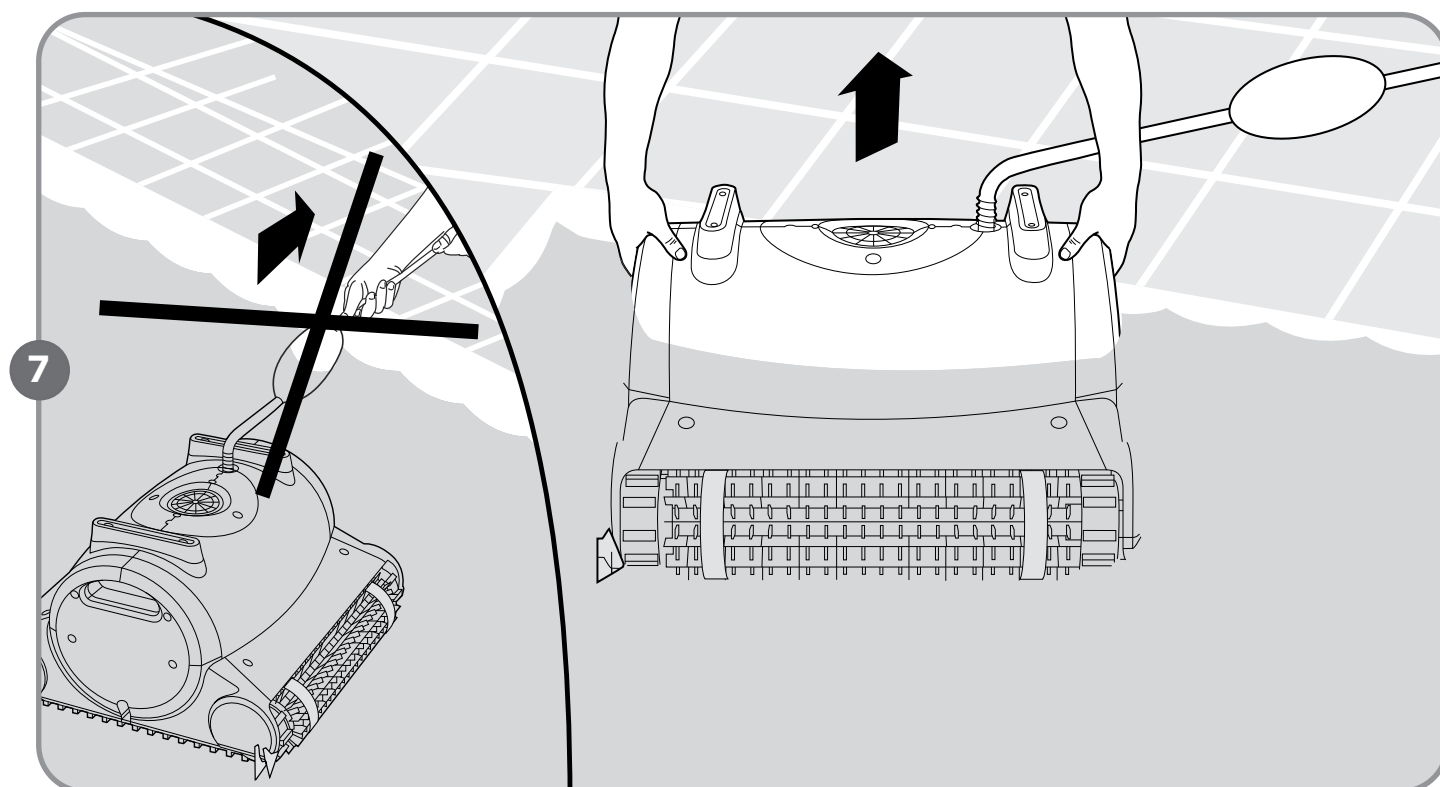
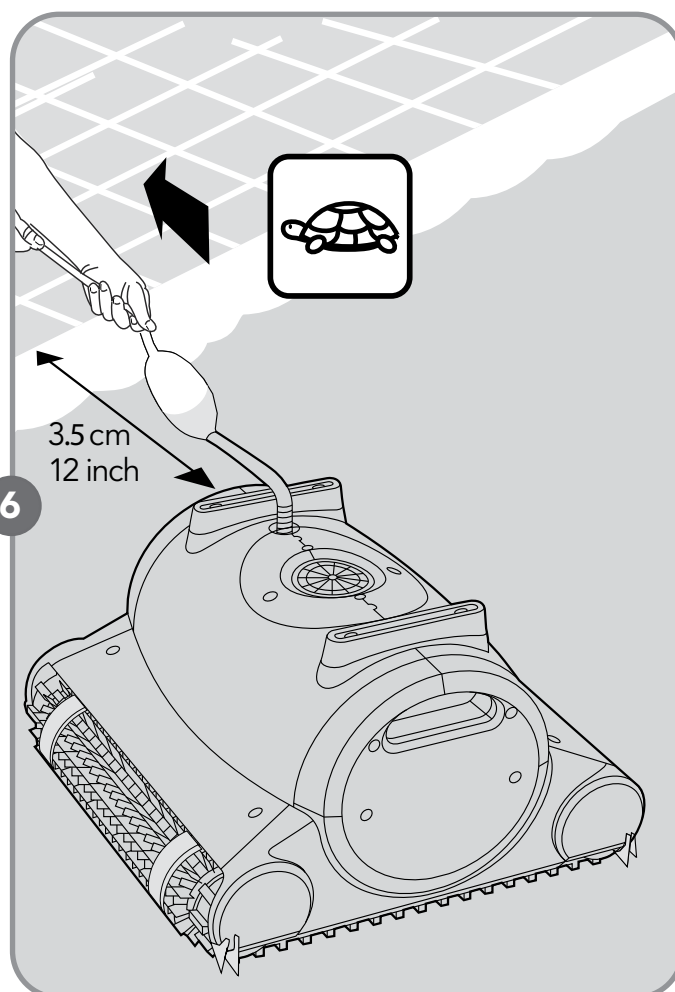
NaCl
max
5000 ppm



- Press on the ON/OFF switch. The Robot Pool Cleaner will now start to work.



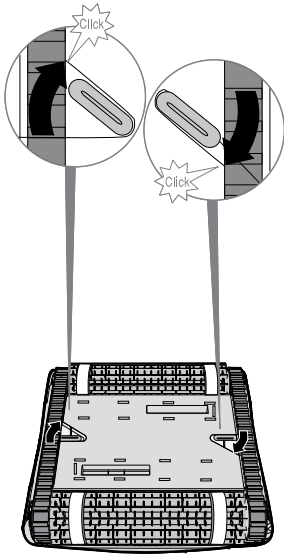
- Robot will perform automatic shut-off at the end of the cleaning cycle.



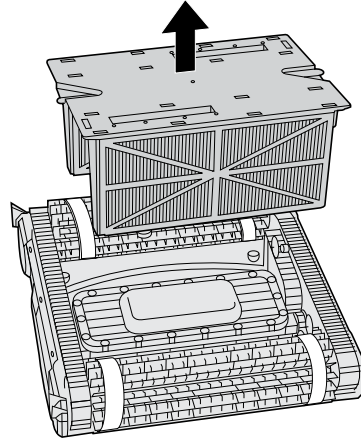
Cartridge



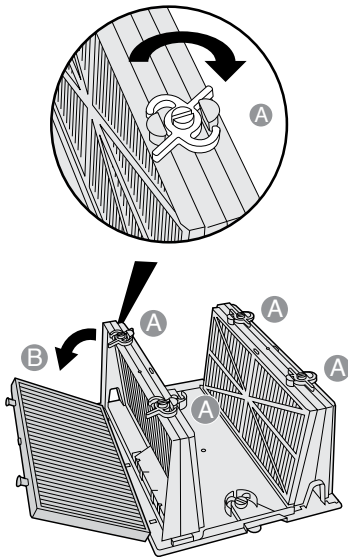
8



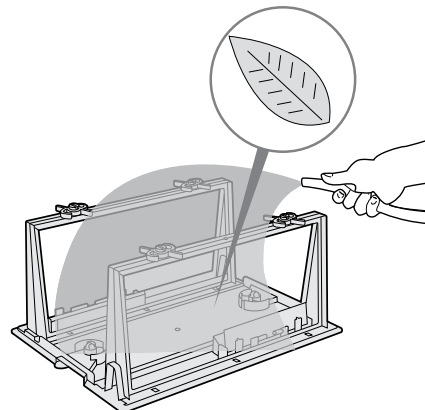
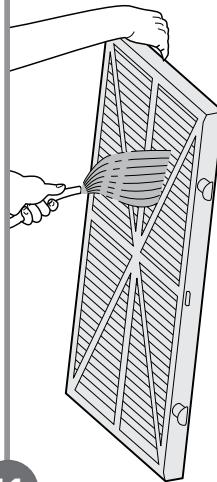
9



10

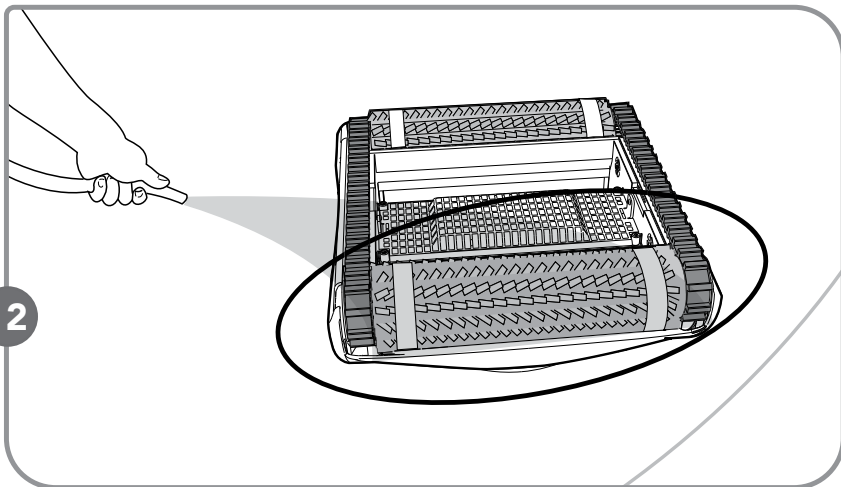


11





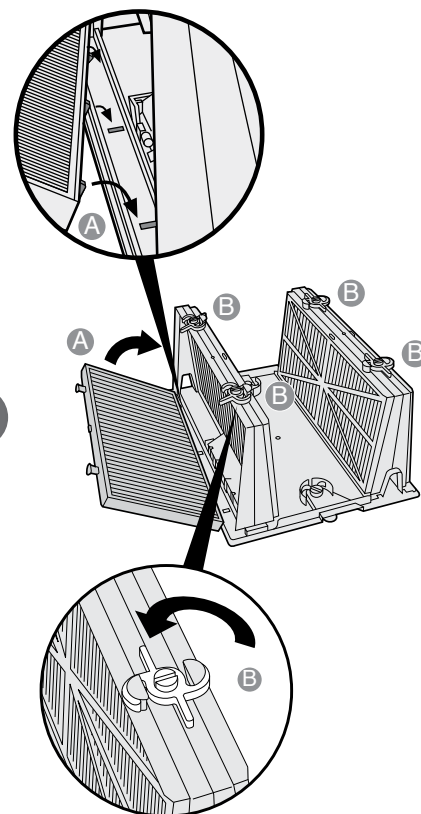
12



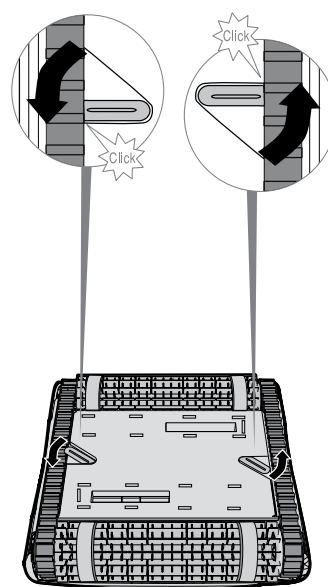
Dual-level filtration system

- Ultra-fine filters for day-to-day use. Factory default.
- Spring filters for dirty pools with large debris such as leaves etc., useful for beginning of season – are included.
- It is recommended to wash the cartridge after every cycle.

13

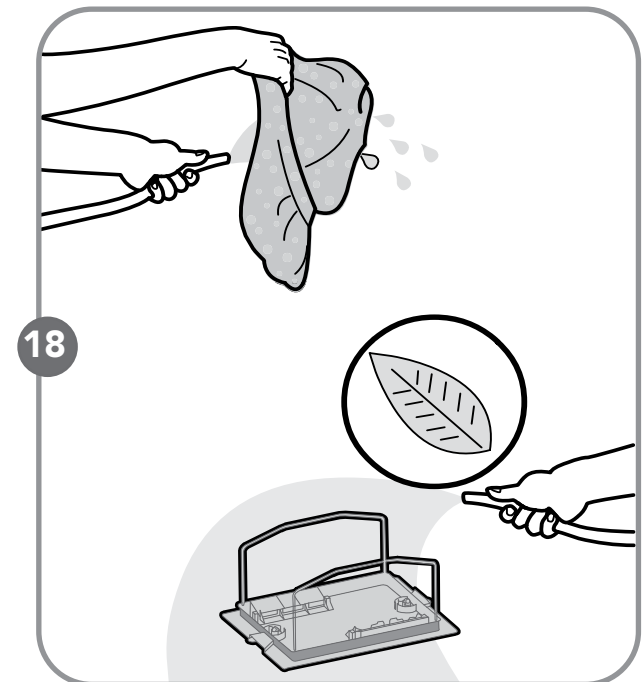
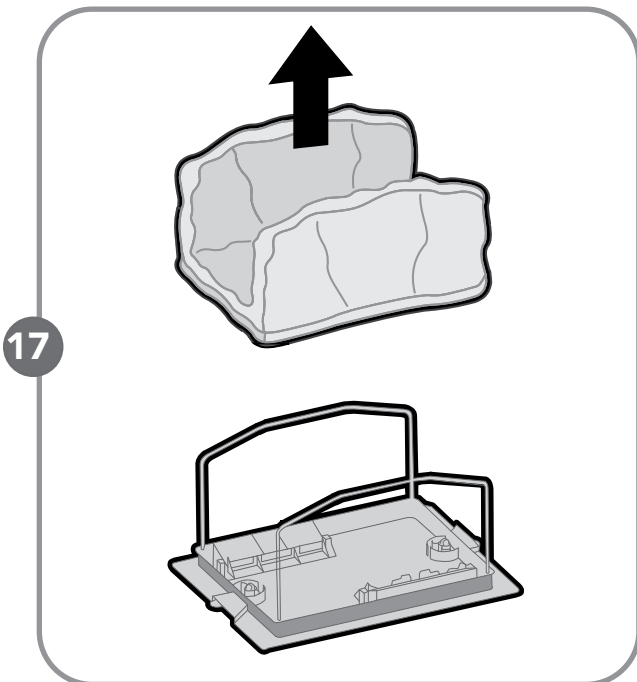
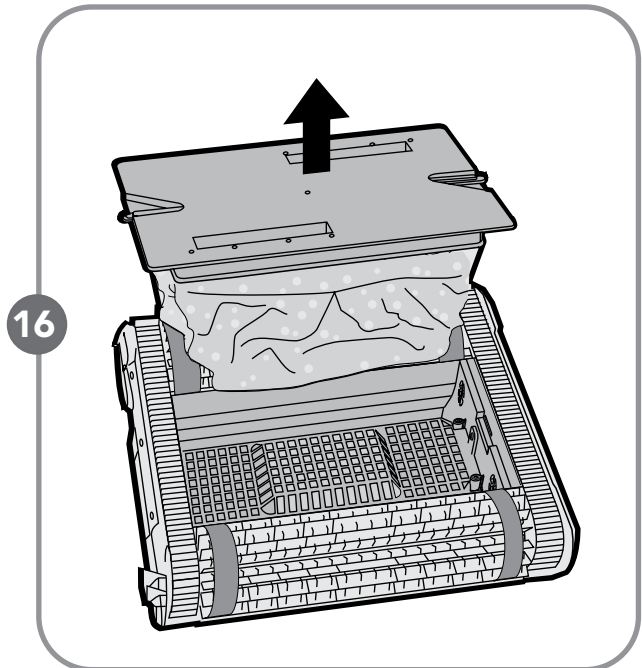
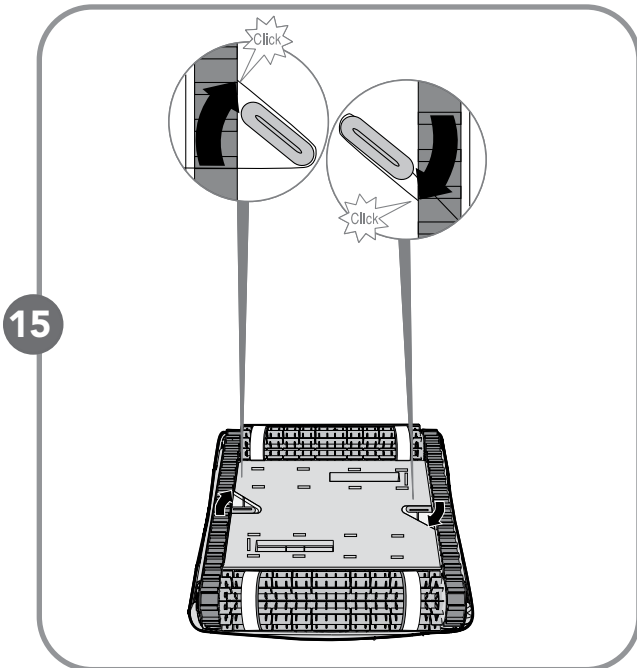


14





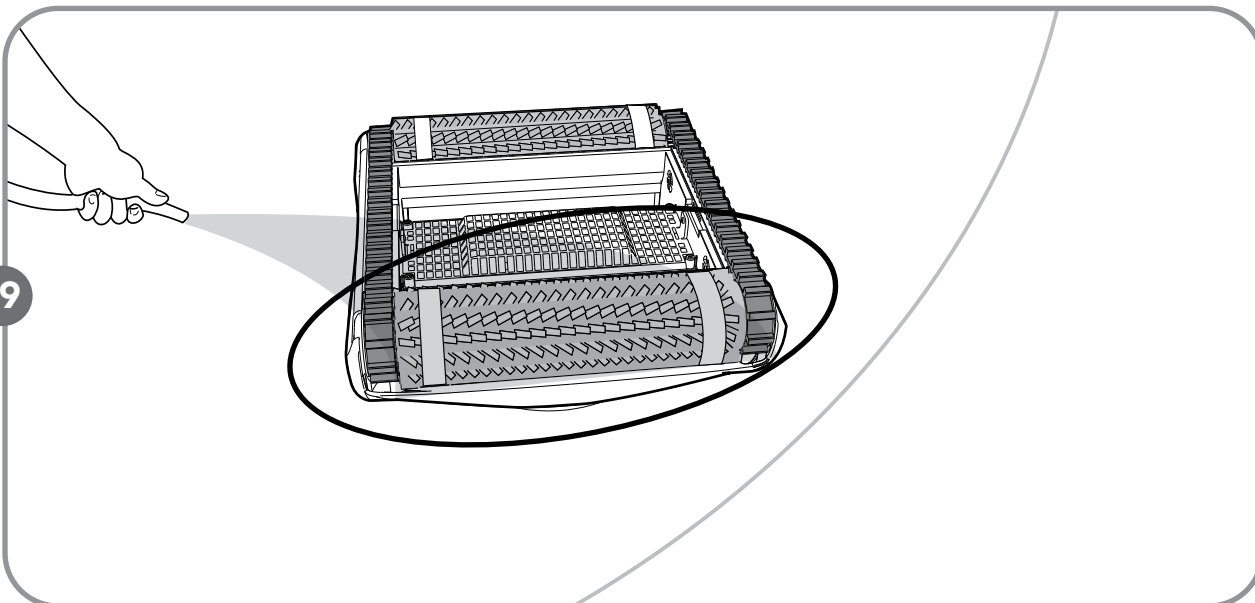
Filter Bag Optional - It is recommended to periodically wash filter bag in a washing machine. Use synthetic cleaning program.



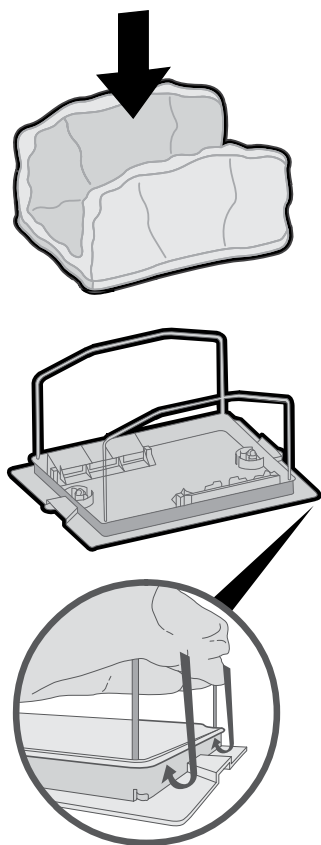


Filter Bag Optional

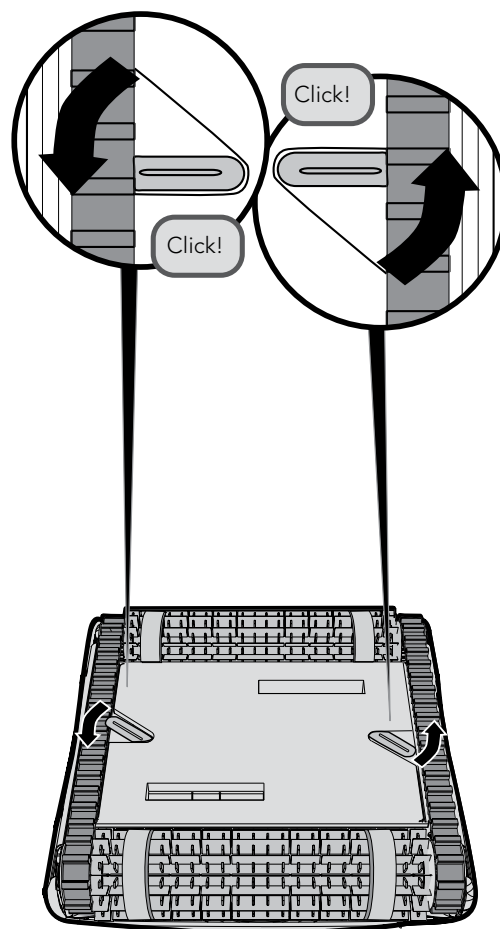
19

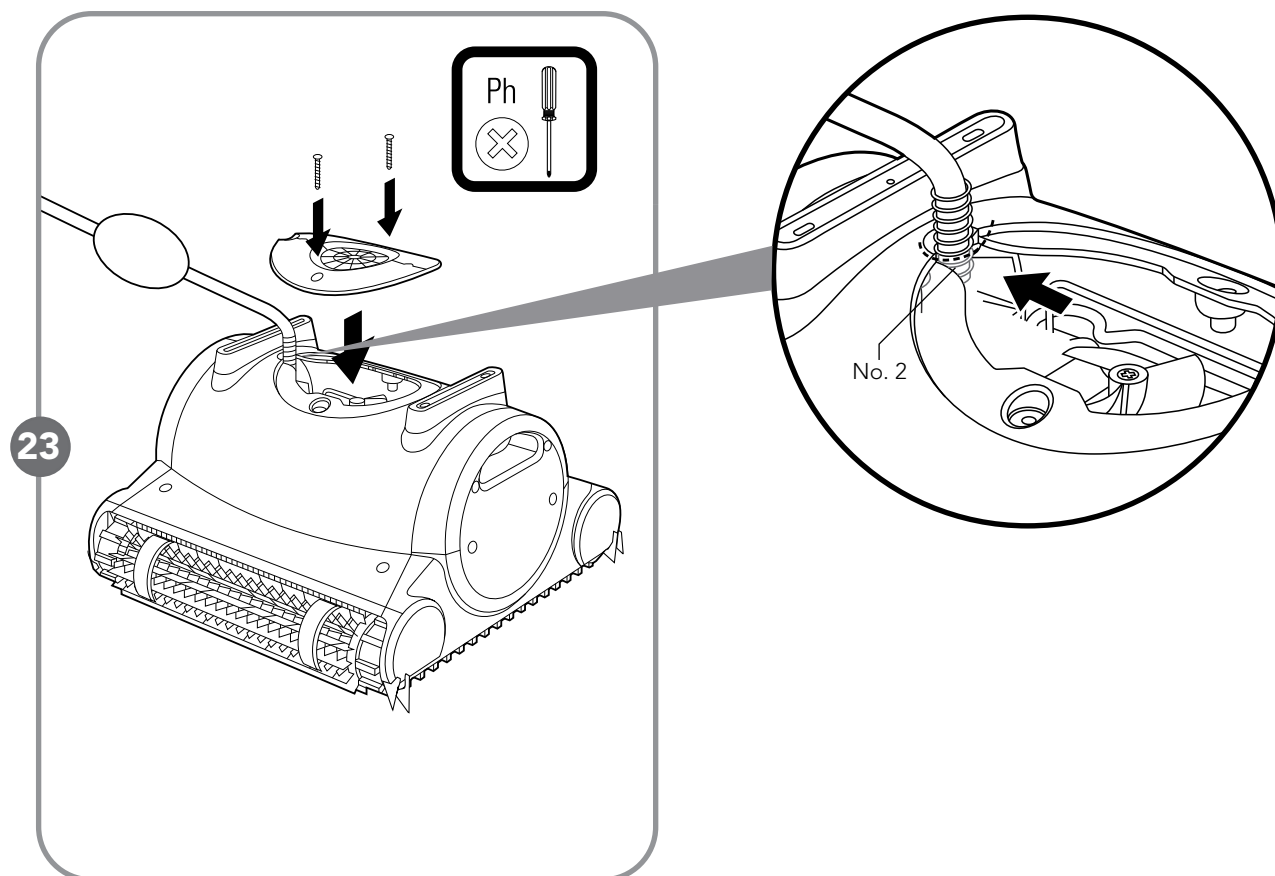
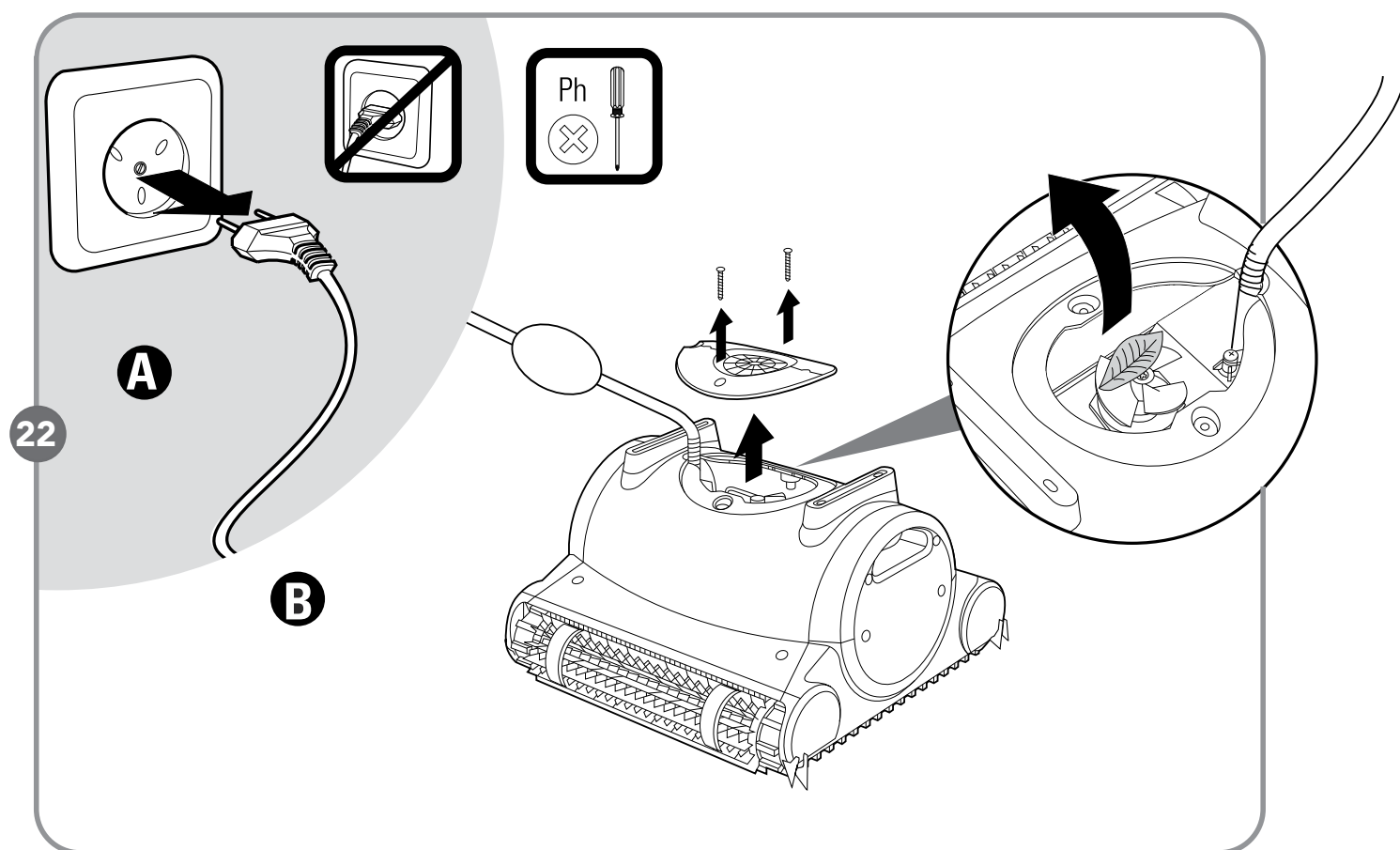


20



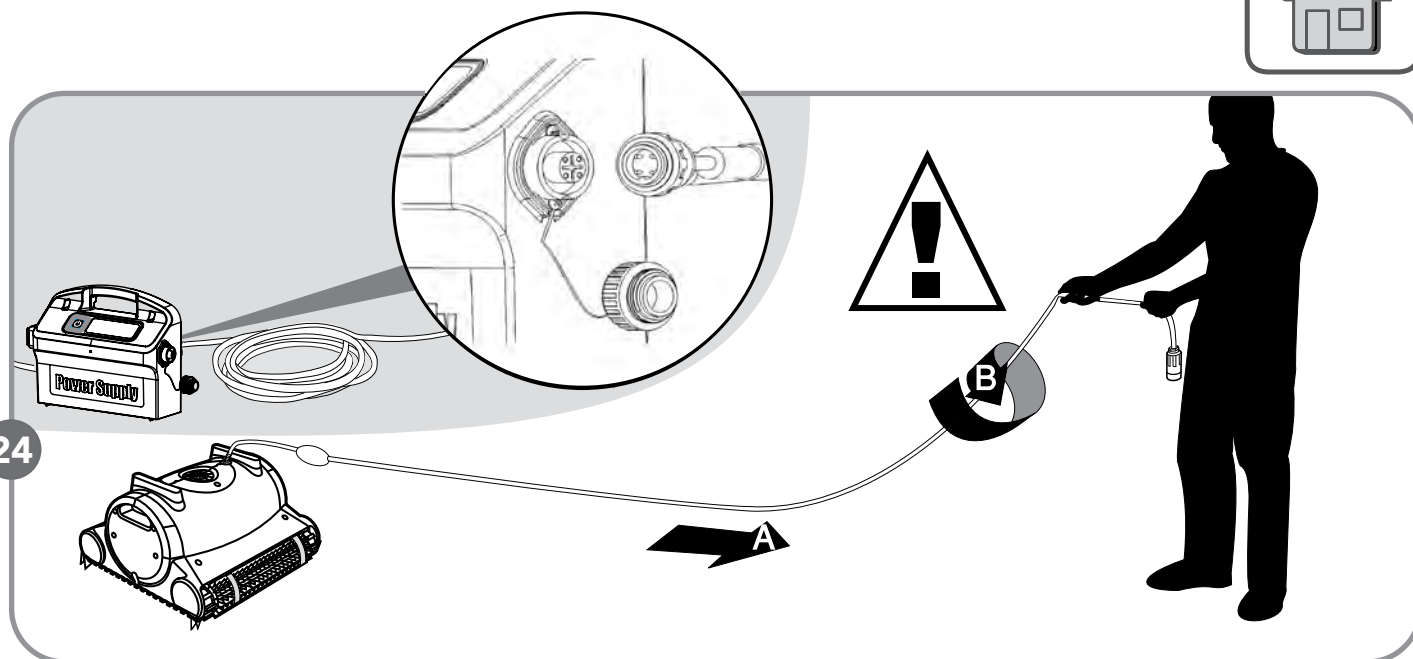
21







24



25

