

Saturn Pro Inverter

A SMALL STEP FOR BIG INNOVATION



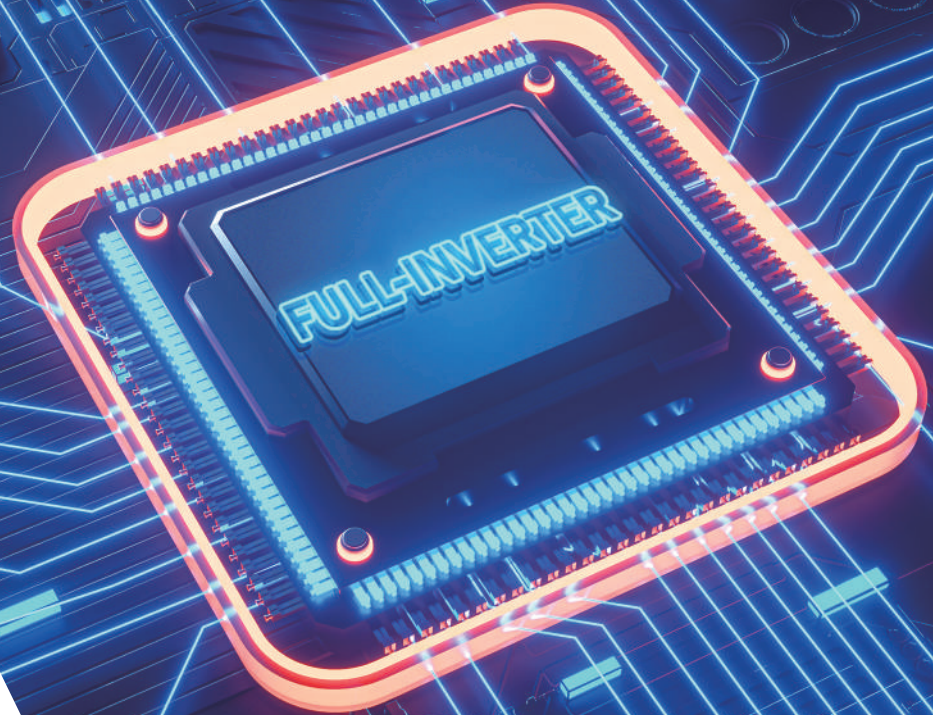
LOVE THE PERFORMANCE

love the cost-effective



THE ORIGINAL FULL-INVERTER TECHNOLOGY

Full-inverter technology drives the DC-inverter twin-rotary compressor hertz-by-hertz and runs the DC-inverter brushless fan motor round-by-round to achieve the optimum performance. At the beginning of the swimming season, Full-inverter pool heat pumps will heat the pool water to the set temperature at 100% heating capacity and then maintain the required temperature at an averagely of 30% of power consumption.



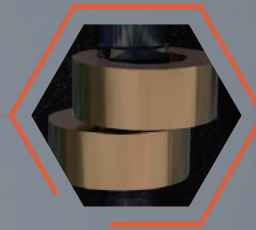
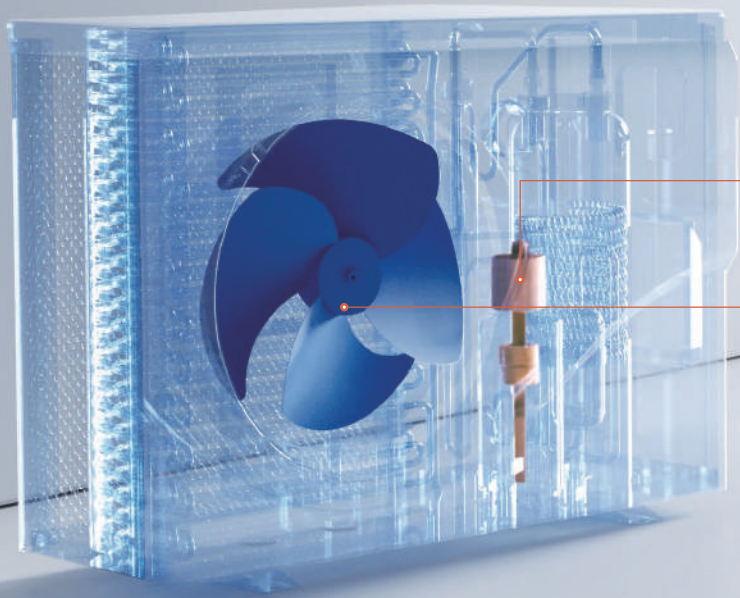


Up to **13**x Energy Saving
COP 13: 1kW Input = 13kW Heat in Return



Average **8** Times Quieter
Average noise level 48dB(A)





Twin-Rotary Compressor



DC-inverter Brushless Fan Motor



Free Built-in Wi-Fi

Remote control anytime & anywhere with Fairland Smart Pool App.



Soft Start

The current will start from 0A and go up slowly to the rated current in 2 minutes after turning on the heat pump



Warranty

- a. 2 year full warranty
- b. 5 year heat exchanger warranty
- c. 25 year titanium heat exchanger tube against corrosion eff 1/8/23

SPECIFICATIONS



Model	IVPR09	IVPR13	IVPR17
Advised pool volume (m ³)	20~40	30~50	35~65
Operating air temperature (°C)		-5~43	
Performance Condition: Air 26°C, Water 26°C, Humidity 80%			
Heating capacity (kW)	9.0	12.5	16.0
COP	12.6~6.9	13.2~7.0	12.3~7.1
COP at 50% capacity	10.5	10.4	9.9
Performance Condition: Air 15°C, Water 26°C, Humidity 70%			
Heating capacity (kW)	6.3	8.5	11.0
COP	6.8~4.9	7.1~4.9	6.8~4.7
COP at 50% capacity	6.3	6.3	6.2
Sound pressure at 1m dB(A)	40.0~52.4	41.9~52.9	44.3~56.1
Sound pressure of 50% capacity at 1m dB(A)	45.5	48.0	48.2
Sound pressure at 10m dB(A)	20.0~32.4	21.9~32.9	24.3~36.1
Heat exchanger	Spiral titanium tube in PVC		
Casing	ABS casing		
Power supply	230V/1 Ph/50Hz		
Rated input power at air 15°C (kW)	0.28~1.28	0.38~1.73	0.52~2.34
Rated input current at air 15°C (A)	1.22~5.56	1.65~7.52	2.26~10.2
Advised water flux (m ³ /h)	3~4	4~6	6.5~8.5
Water pipe in-out size (mm)	48.3		
Net Dimension LxWxH (mm)	872×349×654	872×349×654	962×349×654
Net weight (kg)	46	49	60
Max input current (A)	8.0	12.5	17.0
Circuit breaker (A)	9.5	15.0	20.5
Power cord (mm ²)	3×1.5	3×2.5	3×4



Brisbane

77 Nealdon Drive,
Meadowbrook, QLD 4131
Australia
Phone: 1300 656 956

Perth

2 Stretton Place
Balcatta WA 6021
Australia
Phone: 1300 656 956

Melbourne

Australia
Phone: 1300 656 956

Sydney

Australia
Phone: 1300 656 956